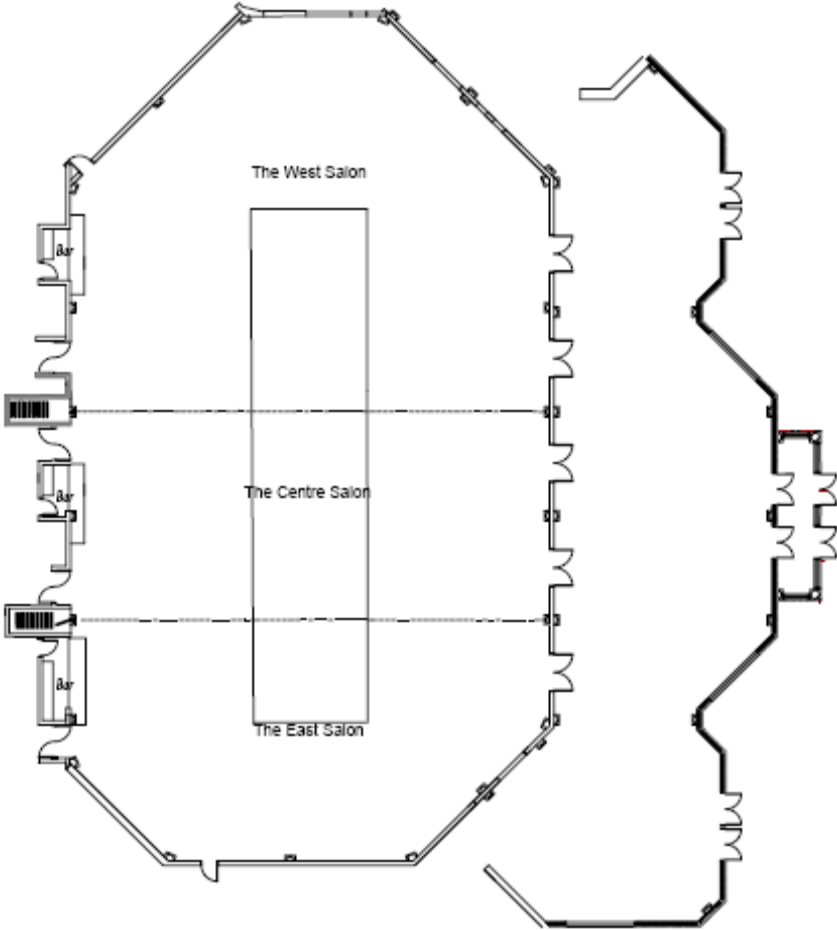




BELLVUE MANOR ROOMS AND FLOOR PLANS

ATTACHED IS FUNCTION ROOM INFORMATION FOR ALL BELLVUE MANOR FUNCTION SPACES

THE GRAND SALON



THE GRAND SALON

SQ. AREA	13,345 SQ FT
DIMENSIONS	90 X 160 FT
CEILING HEIGHT	27 FT

SEATING CAPACITIES

ROUNDS	750
THEATRE	1200
CLASSROOM	600
BOARD	-
U-SHAPE	-
HOLLOW SQUARE	-

FABRICS AND FINISHES

THEME	CLASSICAL ELEGANCE
WALL COVERING	SAGE, CAST LIMESTONE
FLOOR	LEAF PATTERNED CARPETING, HARDWOOD FLOORING
LIGHTING	CRYSTAL CHANDELIERS, QUARTZ WALL SCONES, PIN SPOT LIGHTING - ORGANIZED BY IN HOUSE AUDIO VISUAL PROVIDER

OTHER

COLUMNS IN ROOM	-
NO. OUTLETS / POWER	31 + 6 IN GROUND
PHONE	3
LAST RENOVATED	2007
NUMBER OF GUEST ENTRY POINTS	5
PERMANENT AV	SOUND SYSTEM, AV BOOTH - HIDDEN FROM GUEST VIEWS, 6 RECESSED ELECTRONIC SCREENS, 6 CEILING MOUNTED PROJECTORS, PIN SPOT LIGHTING, MOVEABLE HEAD LIGHTING
PERMANENT STRUCTURES	3 BARS

THE WEST SALON

SQ. AREA	6,062 SQ FT
DIMENSIONS	90 X 75 FT
CEILING HEIGHT	27 FT

SEATING CAPACITIES

ROUNDS	320
THEATRE	600
CLASSROOM	150
BOARD	-
U-SHAPE	-
HOLLOW SQUARE	-

FABRICS AND FINISHES

THEME	CLASSICAL ELEGANCE
WALL COVERING	SAGE, CAST LIMESTONE
FLOOR	LEAF PATTERNED CARPETING, HARDWOOD FLOORING
LIGHTING	CRYSTAL CHANDELIERS, QUARTZ WALL SCONES, PIN SPOT LIGHTING - ORGANIZED BY IN HOUSE AUDIO VISUAL PROVIDER

OTHER

COLUMNS IN ROOM	-
NO. OUTLETS / POWER	13 + 1 IN GROUND
PHONE	1
LAST RENOVATED	2007
NUMBER OF GUEST ENTRY POINTS	2
PERMANENT AV	SOUND SYSTEM, AV BOOTH - HIDDEN FROM GUEST VIEWS, 2 RECESSED ELECTRONIC SCREENS, 2 CEILING MOUNTED PROJECTORS, PIN SPOT LIGHTING, MOVEABLE HEAD LIGHTING
PERMANENT STRUCTURES	1 BAR

THE CENTER SALON

SQ. AREA	3,665 SQ FT
DIMENSIONS	90 X 39 FT
CEILING HEIGHT	27 FT

SEATING CAPACITIES

ROUNDS	200
THEATRE	300
CLASSROOM	150
BOARD	-
U-SHAPE	-
HOLLOW SQUARE	-

FABRICS AND FINISHES

THEME	CLASSICAL ELEGANCE
WALL COVERING	SAGE, CAST LIMESTONE
FLOOR	LEAF PATTERNED CARPETING, HARDWOOD FLOORING
LIGHTING	CRYSTAL CHANDELIERS, QUARTZ WALL SCONES, PIN SPOT LIGHTING - ORGANIZED BY IN HOUSE AUDIO VISUAL PROVIDER

OTHER

COLUMNS IN ROOM	-
NO. OUTLETS / POWER	9 + 3 IN GROUND
PHONE	1
LAST RENOVATED	2007
NUMBER OF GUEST ENTRY POINTS	2
PERMANENT AV	SOUND SYSTEM, AV BOOTH - HIDDEN FROM GUEST VIEWS, 2 RECESSED ELECTRONIC SCREENS, 2 CEILING MOUNTED PROJECTORS, PIN SPOT LIGHTING, MOVEABLE HEAD LIGHTING
PERMANENT STRUCTURES	1 BAR

THE EAST SALON

SQ. AREA	3,618 SQ FT
DIMENSIONS	90 X 46 FT
CEILING HEIGHT	27 FT

SEATING CAPACITIES

ROUNDS	200
THEATRE	300
CLASSROOM	80
BOARD	-
U-SHAPE	-
HOLLOW SQUARE	-

FABRICS AND FINISHES

THEME	CLASSICAL ELEGANCE
WALL COVERING	SAGE, CAST LIMESTONE
FLOOR	LEAF PATTERNED CARPETING, HARDWOOD FLOORING
LIGHTING	CRYSTAL CHANDELIERS, QUARTZ WALL SCONES, PIN SPOT LIGHTING - ORGANIZED BY IN HOUSE AUDIO VISUAL PROVIDER

OTHER

COLUMNS IN ROOM	-
NO. OUTLETS / POWER	9 + 2 IN GROUND
PHONE	1
LAST RENOVATED	2007
NUMBER OF GUEST ENTRY POINTS	1
PERMANENT AV	SOUND SYSTEM, AV BOOTH - HIDDEN FROM GUEST VIEWS, 2 RECESSED ELECTRONIC SCREENS, 2 CEILING MOUNTED PROJECTORS, PIN SPOT LIGHTING, MOVEABLE HEAD LIGHTING
PERMANENT STRUCTURES	1 BAR

THE WEST AND CENTER SALONS

SQ. AREA	9,727 SQ FT
DIMENSIONS	90 X 114 FT
CEILING HEIGHT	27 FT

SEATING CAPACITIES

ROUNDS	520
THEATRE	900
CLASSROOM	450
BOARD	-
U-SHAPE	-
HOLLOW SQUARE	-

FABRICS AND FINISHES

THEME	CLASSICAL ELEGANCE
WALL COVERING	SAGE, CAST LIMESTONE
FLOOR	LEAF PATTERNED CARPETING, HARDWOOD FLOORING
LIGHTING	CRYSTAL CHANDELIERS, QUARTZ WALL SCONES, PIN SPOT LIGHTING - ORGANIZED BY IN HOUSE AUDIO VISUAL PROVIDER

OTHER

COLUMNS IN ROOM	-
NO. OUTLETS / POWER	22 + 4 IN GROUND
PHONE	2
LAST RENOVATED	2007
NUMBER OF GUEST ENTRY POINTS	4
PERMANENT AV	SOUND SYSTEM, AV BOOTH - HIDDEN FROM GUEST VIEWS, 4 RECESSED ELECTRONIC SCREENS, 4 CEILING MOUNTED PROJECTORS, PIN SPOT LIGHTING, MOVEABLE HEAD LIGHTING
PERMANENT STRUCTURES	2 BARS

THE EAST AND CENTER SALONS

SQ. AREA	7,283 SQ FT
DIMENSIONS	90 X 85 FT
CEILING HEIGHT	27 FT

SEATING CAPACITIES

ROUNDS	400
THEATRE	600
CLASSROOM	300
BOARD	-
U-SHAPE	-
HOLLOW SQUARE	-

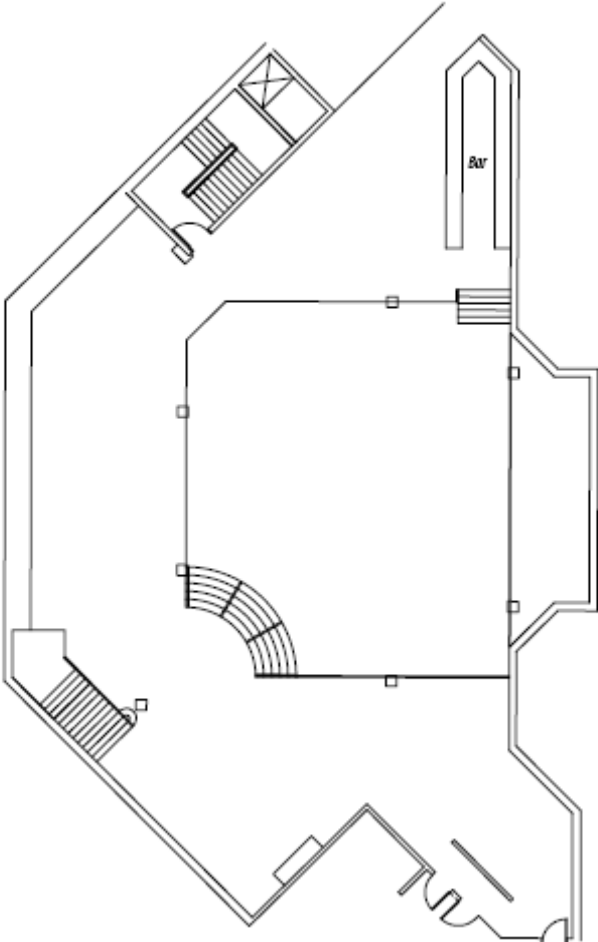
FABRICS AND FINISHES

THEME	CLASSICAL ELEGANCE
WALL COVERING	SAGE, CAST LIMESTONE
FLOOR	LEAF PATTERNED CARPETING, HARDWOOD FLOORING
LIGHTING	CRYSTAL CHANDELIERS, QUARTZ WALL SCONES, PIN SPOT LIGHTING - ORGANIZED BY IN HOUSE AUDIO VISUAL PROVIDER

OTHER

COLUMNS IN ROOM	-
NO. OUTLETS / POWER	18 + 5 IN GROUND
PHONE	2
LAST RENOVATED	2007
NUMBER OF GUEST ENTRY POINTS	3
PERMANENT AV	SOUND SYSTEM, AV BOOTH - HIDDEN FROM GUEST VIEWS, 4 RECESSED ELECTRONIC SCREENS, 4 CEILING MOUNTED PROJECTORS, PIN SPOT LIGHTING, MOVEABLE HEAD LIGHTING
PERMANENT STRUCTURES	2 BARS

THE LIBRARY ROOM



THE LIBRARY ROOM

SQ. AREA	3,450 SQ FT
DIMENSIONS	SPLIT LEVEL FUNCTION ROOM
CEILING HEIGHT	8.5 FT / 12 FT

SEATING CAPACITIES

ROUNDS	200
THEATRE	200
CLASSROOM	80
BOARD	-
U-SHAPE	22
HOLLOW SQUARE	44

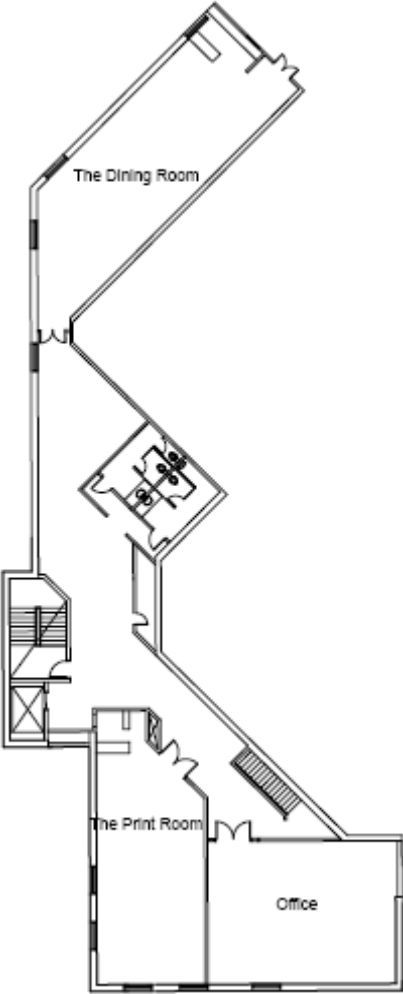
FABRICS AND FINISHES

THEME	LIBRARY, MAHOGANY BOOK CASES, FRENCH DOORS
WALL COVERING	FRECH CREAM AND FRAMED ANTIQUE PRINTS
FLOOR	STYLIZED FLOWER PATTERNED CARPETING, HARDWOOD FLOORING
LIGHTING	CRYSTAL CHANDELIER, INTELLIGENT LIGHTING – ORGANIZED BY IN-HOUSE AUDIO VISUAL PROVIDER

OTHER

COLUMNS IN ROOM	7
NO. OUTLETS / POWER	11 + 2 IN GROUND
PHONE	2
LAST RENOVATED	2007
NUMBER OF GUEST ENTRY POINTS	1
PERMANENT AV	SOUND SYSTEM, AV BOOTH - HIDDEN FROM GUEST VIEWS, 2 RECESSED ELECTRONIC SCREENS, 2 CEILING MOUNTED PROJECTORS, PIN SPOT LIGHTING, MOVEABLE HEAD LIGHTING
PERMANENT STRUCTURES	1 BAR, 1 FIREPLACE

THE PRINT ROOM AND THE DINING ROOM



THE PRINT ROOM

SQ. AREA	800 SQ FT
DIMENSIONS	40 x 20 FT
CEILING HEIGHT	8.5 FT

SEATING CAPACITIES

ROUNDS	40
THEATRE	50
CLASSROOM	20
BOARD	20
U-SHAPE	12
HOLLOW SQUARE	-

FABRICS AND FINISHES

THEME	ANTIQUE PRINTS
WALL COVERING	FRESH CREAM AND FRAMED ANTIQUE PRINTS
FLOOR	STYLIZED FLOWER PATTERNED CARPETING
LIGHTING	RECESSED LIGHTING, QUARTZ WALL SCONES

OTHER

COLUMNS IN ROOM	-
NO. OUTLETS / POWER	5
PHONE	1
LAST RENOVATED	2007
NUMBER OF GUEST ENTRY POINTS	1
PERMANENT AV	SOUND SYSTEM, 1 RECESSED ELECTRONIC SCREEN, 1 CEILING MOUNTED PROJECTOR

PERMANENT STRUCTURES	1 BAR
----------------------	-------

THE DINING ROOM

SQ. AREA	1,280 SQ FT
DIMENSIONS	64 X 20 FT
CEILING HEIGHT	8.5 FT

SEATING CAPACITIES

ROUNDS	60
THEATRE	80
CLASSROOM	60
BOARD	30
U-SHAPE	-
HOLLOW SQUARE	-

FABRICS AND FINISHES

THEME	HEAR OF PROVENCE
WALL COVERING	JACOBAN GOLD
FLOOR	STYLIZED FLOWER PATTERNED CARPETING
LIGHTING	3 CLEAR GLASS PETITE CHANDELIERS, RECESSED LIGHTING, QUARTZ WALL SCONES

OTHER

COLUMNS IN ROOM	-
NO. OUTLETS / POWER	5
PHONE	1
LAST RENOVATED	2008
NUMBER OF GUEST ENTRY POINTS	1
PERMANENT AV	SOUND SYSTEM, 1 RECESSED ELECTRONIC SCREEN, 1 CEILING MOUNTED PROJECTOR

PERMANENT STRUCTURES	1 BAR, 1 CHINA CABINET
----------------------	------------------------